

Lens Fluting

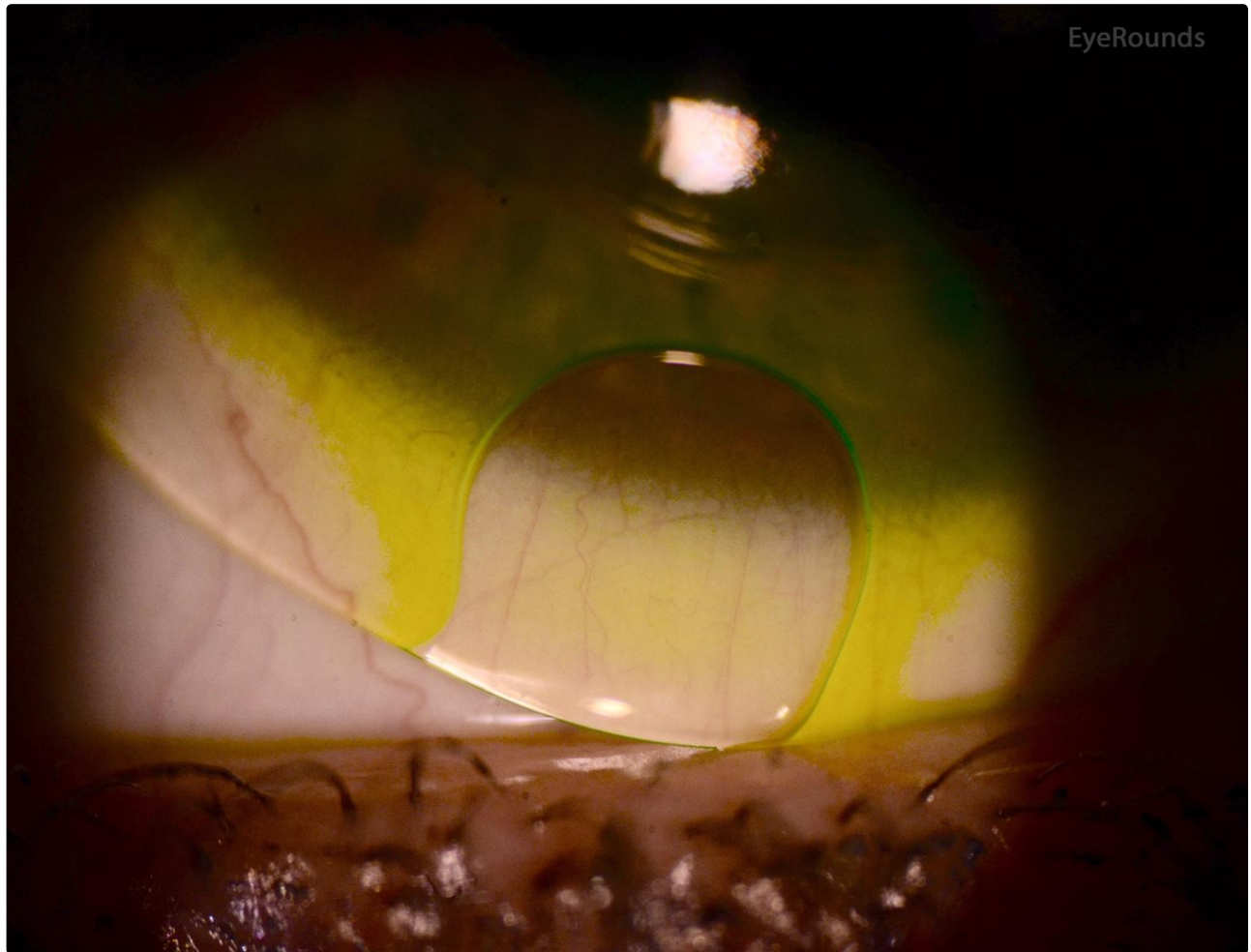
Category(ies): [Contact Lens](#)

Contributor: [Tressa Larson OD FAAO](#)

Photographer: [Tressa Larson OD FAAO](#)



A true excessively flat soft contact lens (or soft contact lens skirt as is the case in this hybrid lens) may have too much material to rest all of its surface touching the conjunctiva. The extra or excess material can "flute" up causing a wrinkle at the edge of the lens and/or a bubble. Such a lens is generally uncomfortable because it moves excessively with the blink and because the eyelids hit that elevated material as they traverse the surface of the eye.



[Enlarge](#)

[Download](#)

Image Permissions:





Ophthalmic Atlas Images by EyeRounds.org, The University of Iowa are licensed under a Creative Commons Attribution-NonCommercial-NoDerivs 3.0 Unported License.

Address

University of Iowa
Roy J. and Lucille A. Carver College
of Medicine
Department of Ophthalmology and
Visual Sciences
200 Hawkins Drive
Iowa City, IA 52242

[Support Us](#)

Legal

Copyright © 2019 The University of
Iowa. All Rights Reserved
[Report an issue with this page](#)
[Web Privacy Policy](#) |
[Nondiscrimination Statement](#)

Related Links

[Cataract Surgery for Greenhorns](#)
[EyeTransillumination](#)
[Gonioscopy.org](#)
[Iowa Glaucoma Curriculum](#)
[Iowa Wet Lab](#)
[Patient Information](#)
[Stone Rounds](#)
[The Best Hits Bookshelf](#)

EyeRounds Social Media

Follow



Receive notification of new cases,
[sign up here](#)
[Contact Us](#)
[Submit a Suggestion](#)